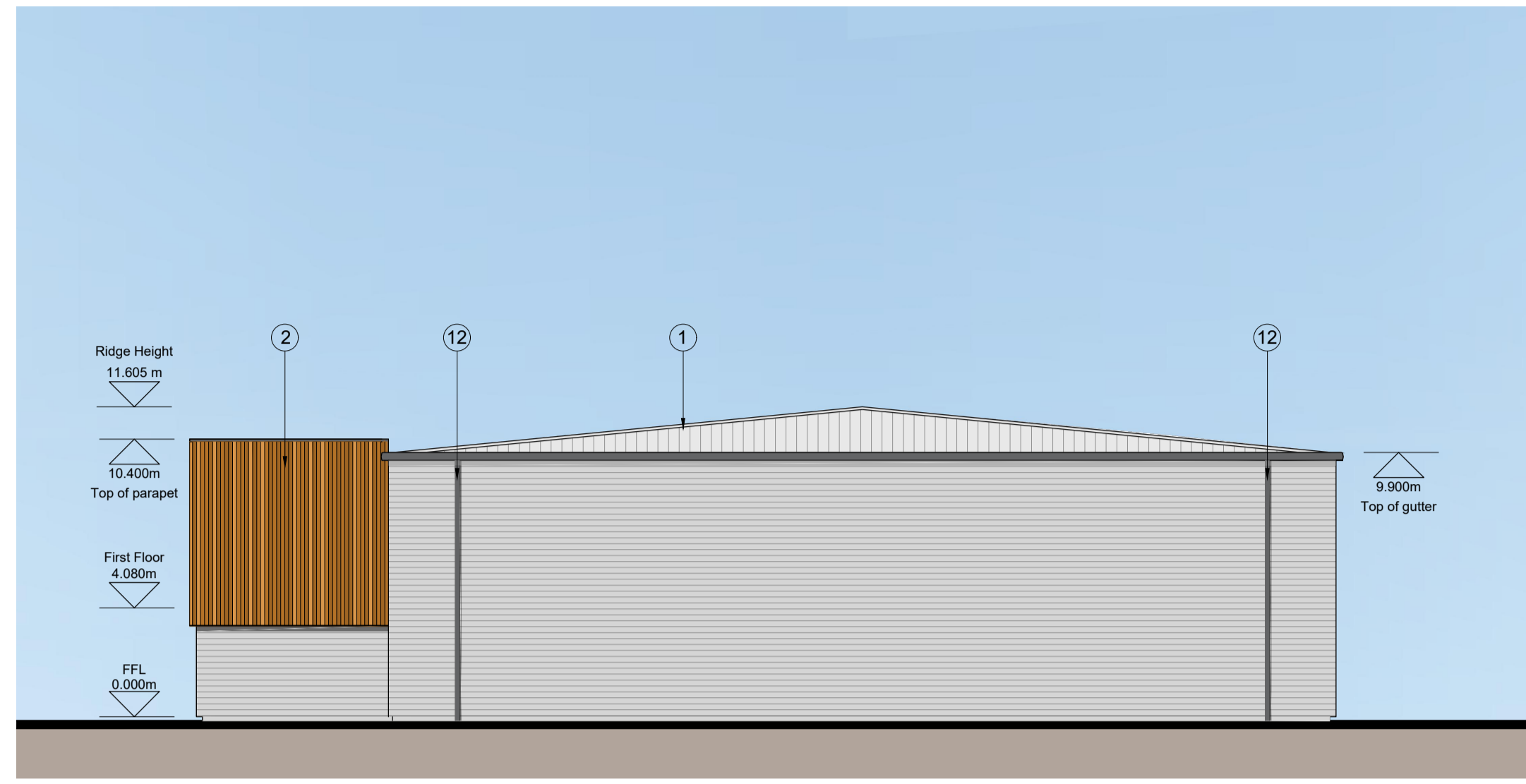
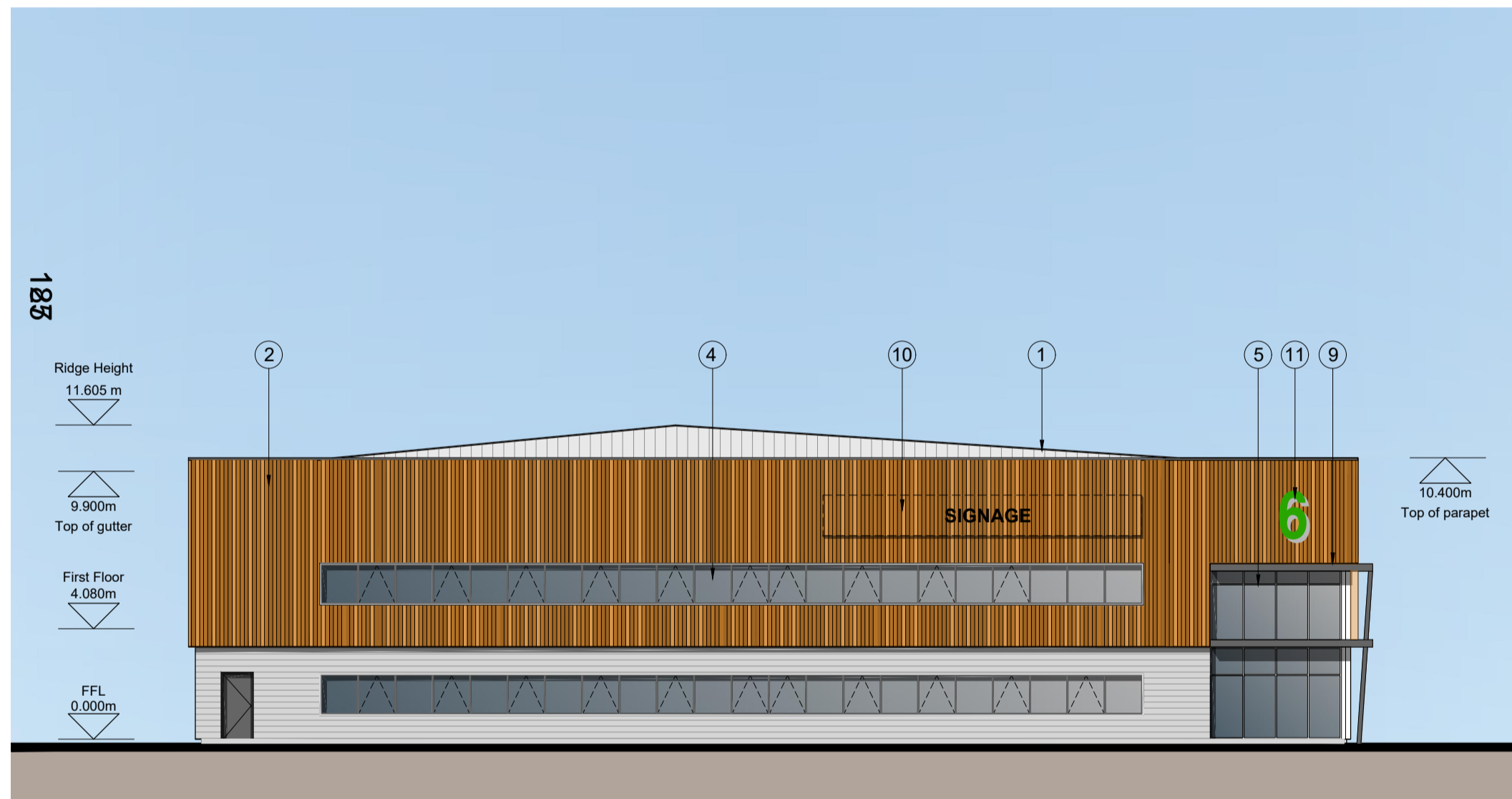


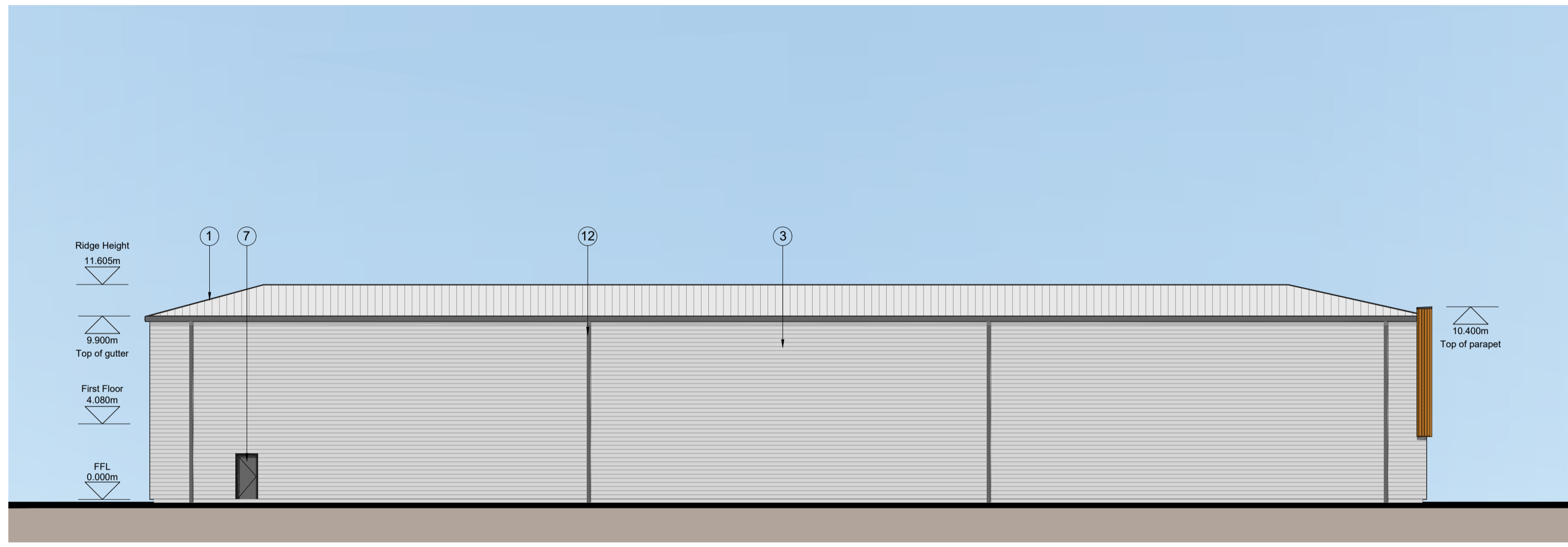
EASTERN ELEVATION



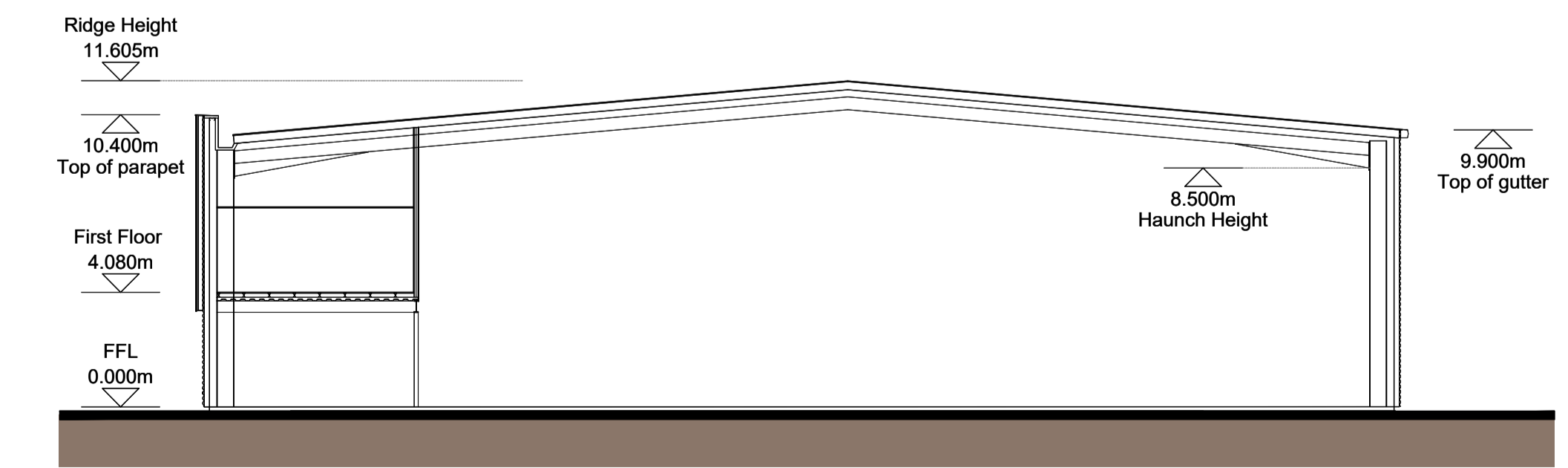
NORTHERN ELEVATION



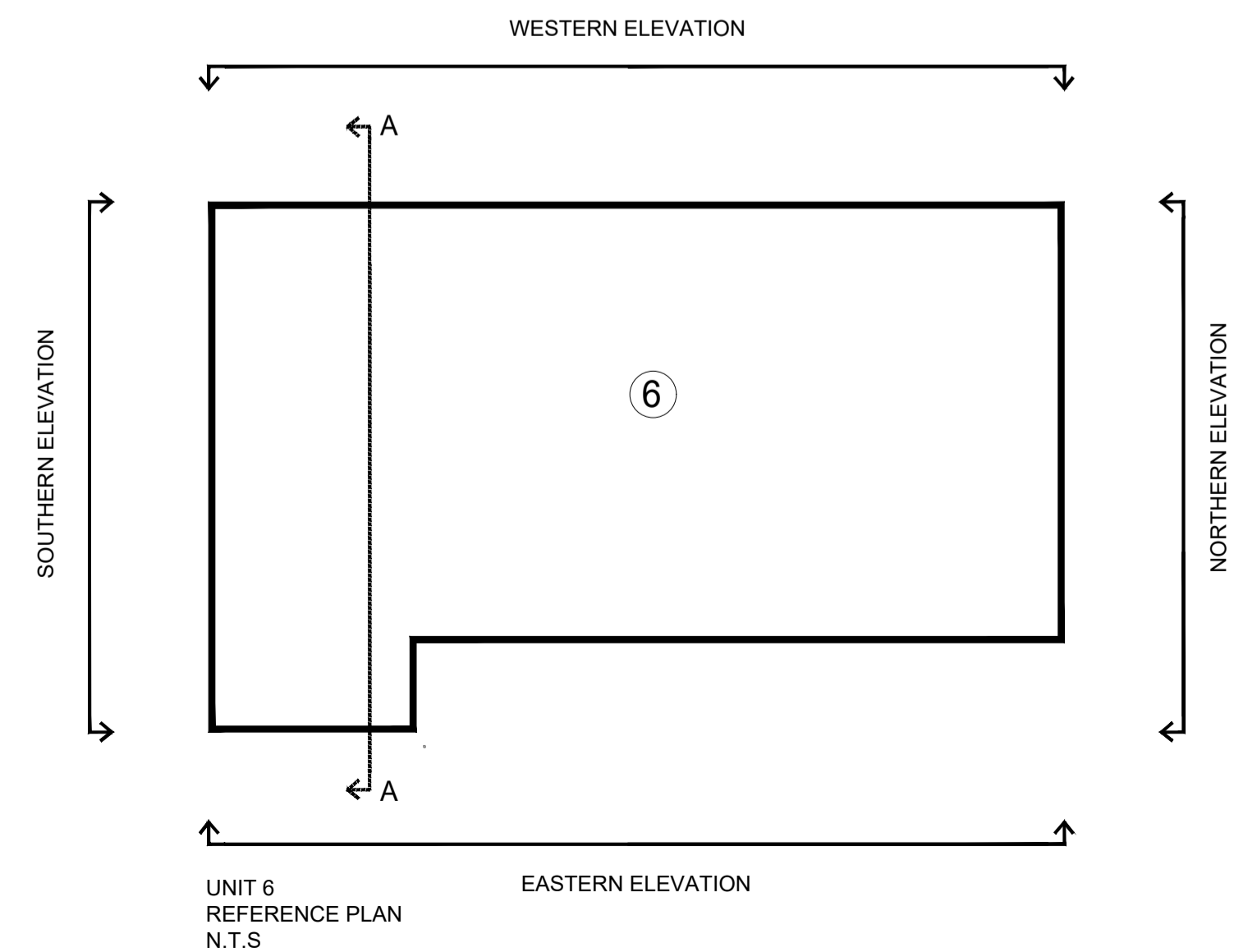
SOUTHERN ELEVATION



WESTERN ELEVATION



UNIT 6 SECTION AA



UNIT 6 REFERENCE PLAN N.T.S.

MATERIALS KEY

- ① PROFILED ROOF CLADDING (GOOSEWING GREY RAL 7038)
- ② SIBERIAN LARCH CLADDING
- ③ HORIZONTAL ARC PROFILE CLADDING (METALLIC SILVER RAL 9006)
- ④ ALUMINIUM FRAMED WINDOWS (ANTHRACITE RAL 7016)
- ⑤ ALUMINIUM FRAMED ENTRANCE DOORS AND FULL HEIGHT GLAZING (ANTHRACITE RAL 7016)
- ⑥ LOADING BAY DOORS (ANTHRACITE RAL 7016)
- ⑦ STEEL PERSONNEL DOORS (ANTHRACITE RAL 7016)
- ⑧ STEEL BOLLARD (GREEN RAL 6018)
- ⑨ MAIN ENTRANCE BRISE-SOLEIL
- ⑩ SIGNAGE ZONE, INDICATIVE
- ⑪ BACKLIT ILLUMINATED ALUMINIUM UNIT NUMERAL (RAL 6018 FACE)
- ⑫ ALUMINIUM RAINWATER GOODS (ANTHRACITE RAL 7016)

Client:
HE2 READING 1 GP LTD (LONDON)



Project:
HEADLEY ROAD EAST
WOODLEY

12 Warren Yard,
Warren Park,
Milton Keynes,
MK12 5HW
01908 305 246

info@prc-group.com
www.prc-group.com

Drawing Title:
UNIT 6
PROPOSED ELEVATIONS
& SECTION

Architecture

Planning
Master Planning
Urban Design
Interiors
Landscape

Scale @ A1: 1:200
Checked by: JR
Date: SEPT 21

Job No: 11359
Stage: PL 121
Drawing No: PL 121
Rev: _____

Issue Status:
Construction Preliminary
Information Approval
Tender

Offices
Woking
London
Milton Keynes
Warsaw

This page is intentionally left blank